

Unlimited Connectivity

Connections to Fieldbus Systems



Ultra Compact

The WMC weigh module has a width of 25mm allowing integration of high-resolution weighing where space is limited. Capacities: 10 g - 20 g. Readabilities: 0.01 mg - 0.1 mg.



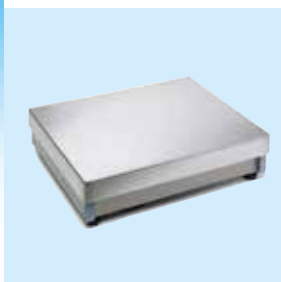
For Smallest Samples

The WXS and WXT weigh modules are made for accurate automated weighing of smallest samples in industrial environments. Capacities: 22 g - 220g. Readabilities: 1 µg - 0.01mg.



Accurate and Versatile

The slim WMS weigh module has adaptable platforms, incorporated calibration weight and IP66 for wash down. Capacities 120 g - 6200 g. Readabilities: 0.1 mg - 10 mg.



Large Precision Platforms

The WMH weigh modules offer high-accuracy and high-capacity combined with large platform sizes for carrying customized load adapters. Capacities: 15 kg - 3000 kg. Readabilities: 0.1 g - 50 g



Fieldbus Modules – for direct communication with weigh modules

The modules have automatic parameter detection features and an integrated command set for weigh modules to facilitate commissioning. DIN rail assembly enables efficient installation in the control cabinet.

A BASIC operation mode supports all frequently used commands such as transferring weight result, zero setting, status information, identification and calibration.

Enhanced applications can be realized with the EXTENDED operation mode. It supports all interface commands and allows configuration of weigh module via fieldbus.



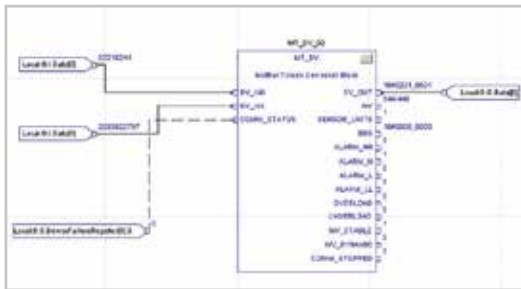
Fast and Convenient Integration of Weigh Modules Into Most Common PLC



Enabled by
Rockwell Automation
Technologies

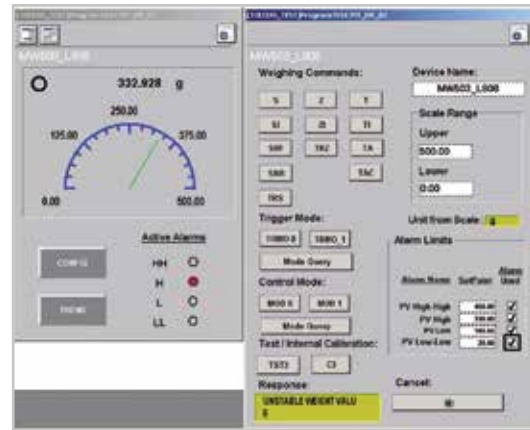
DeviceNet

EtherNet/IP



Rockwell Automation Logix5000

As of RSLogix5000 Version 16, a complimentary open-source Rockwell Automation Logix5000 function block and faceplates specific to METTLER TOLEDO products with SICS communication protocol will be available. They will significantly shorten integration time and save valuable resources and development time for system integrators and end users.



PROFIBUS

PROFINET

Siemens STEP 7

METTER TOLEDO offers the user of Profibus and ProfiNet IO modules an example for Siemens Step 7. Engineering notes explain the configuration to ensure a fast start and correct integration.

SIWAREX FTA

As an alternative to Fieldbus the weigh modules WM, WMS and WMH can directly be connected to the SIWAREX FTA module. Siemens and METTLER TOLEDO commonly certified communication between these weigh modules and the SIWAREX FTA within the "Totally Integrated Automation" program.



CC-Link

CC Link

METTER TOLEDO offers the users of CC-Link modules an Engineering Note which explains the configuration to ensure a fast start and correct integration into a Mitsubishi PLC.

Technical Data Fieldbus Modules



Interface	Profibus DP slave (DPVO) according to EN 50170	Profinet IO slave according to IEC 61784 (CPF-3/3)	DeviceNet adapter according to EN 50325-2	Ethernet/IP adapter according to EN 50325-2	CC-Link Slave according to BTP-05026-D
Baud rate	9.6 kbit/s – 12 Mbit/s	100 Mbit/s	125, 250 or 500 kbit/s	10/100 Mbit/s DHCP	156 kbit/s - 10Mbit/s.
Address range	0–99	Full IP address range, DHCP	MAC ID 0-63	Full IP address range	1-64 (Basic Mode), 1-61 (Extended Mode)
Connector	SUB D9 female	RJ-45	Terminal block with 5 connectors	RJ-45	Terminal block with 5 connectors
	Scale: SUB D9 female Power: Terminal block with 2 connectors				
Subnet connection	RS232, RS422, and RS485, up to 57.6 kbit/s				
Housing	Plastic housing with snap-on connection to DIN-Rail				
Dimensions	120 mm x 75 mm x 27 mm / 4.7 in x 2.0 in x 1.1 in				
Mounting	DIN rail				
Power supply	24 V DC \pm 10% / typically 100 mA				
Protection	IP 20				
Temperature	+5 °C to +55 °C / 41 to 131 degrees Fahrenheit				
Relative humidity	The product is designed for a relative humidity of 0 to 95 %, non-condensing				
Weight value	Single floating point number according to IEEE 754 (Motorola word)				
Included in delivery	Module, including configuration software, configuration cable, detailed instruction and installation manual				
Compatibility	Automated precision weighing modules: WX, WM, and WMH All METTLER TOLEDO MT-SICS-compatible scales				
CE mark	Certified according to European standards unless otherwise stated.				
Emission	According to EN 50081-2:1993				
Immunity	According to EN 61000-6-2:1999				
UL/c-UL compliance	The units are open type listed by the Underwriters Laboratories. The certificate is valid when the unit is installed in a switch cabinet or equivalent. The certification has been documented by UL in file E214107.				

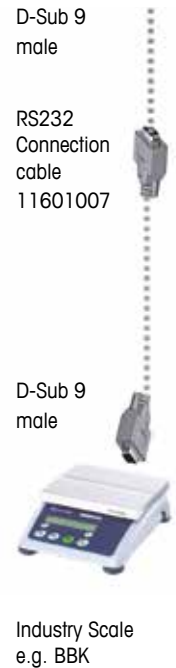
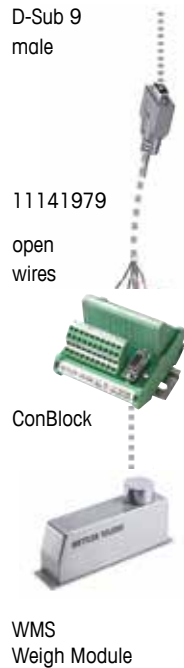
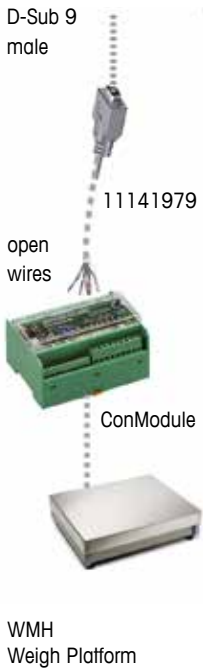
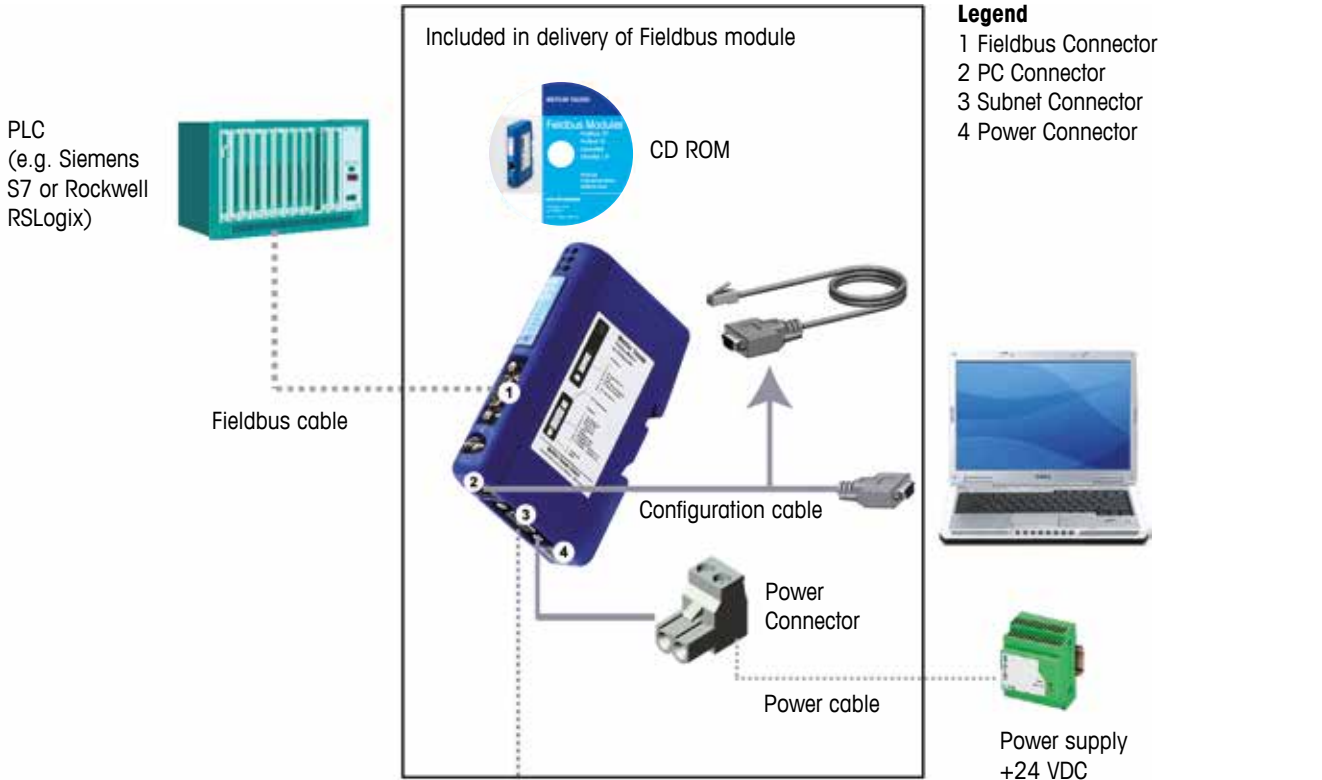
Order information

Model	Item number
Profibus DP Module	42 102 809
Profinet IO Module	42 102 859
DeviceNet Module	42 102 810
EtherNet/IP Module	42 102 860
CC-Link Module	30 038 775
D-Sub 9 male – open leads, 1 m	11 141 979
D-Sub 9 male – male, 1.8 m	11 601 007

Scope of delivery

- Fieldbus module
- Configuration cable
- Quick guide

Configuration overview



Mettler-Toledo AG
 Laboratory & Weighing Technologies
 CH-8606 Greifensee, Switzerland
 Tel. +41 44 944 22 11
 Fax +41 44 944 30 60

www.mt.com

For more information

Subject to technical changes
 © 11/2013 Mettler-Toledo AG
 MarCom Industrial